

Adapters

When you are using a Reinflex high pressure hose, you want to be sure that any connections you make are equally reliable. That's where Reinflex high pressure adapters come in. Available in both plated steel and stainless steel, Reinflex adapters come in a variety of fitments and insure leak free connections and optimal flow. For added convenience and value, we even sell a pre-boxed assortment containing 17 of the most popular adapters in the industry.

PLATED STEEL

HEX NIPPLE

MALE NPT TO MALE NPT, TAPERED ENDS 30° CHAMFER



PART #	SIDE A	SIDE B
HN 12	1/8"	1/8"
HN 25	1/4"	1/4"
HN 38	3/8"	3/8"
HN 50	1/2"	1/2"
HN 75	3/4"	3/4"
HN 100	1"	1"

HEX REDUCING NIPPLE

MALE NPT TO MALE NPT, TAPERED ENDS 30° CHAMFER



PART #	SIDE A	SIDE B
HRN 1225	1/8"	1/4"
HRN 2538	1/4"	3/8"
HRN 2550	1/4"	1/2"
HRN 3850	3/8"	1/2"
HRN 3875	3/8"	3/4"
HRN 5075	1/2"	3/4"
HRN 5010	1/2"	1"
HRN 7510	3/4"	1"

MALE CONNECTOR

JIC MALE TO MALE NPT, 30° CHAMFER END



PART #	SIDE A	SIDE B
HNJ 0412	JIC#4	1/8"
HNJ 0425	JIC#4	1/4"
HNJ 0438	JIC#4	3/8"
HNJ 0450	JIC#4	1/2"
HNJ 0525	JIC#5	1/4"
HNJ 0625	JIC#6	1/4"
HNJ 0638	JIC#6	3/8"
HNJ 0650	JIC#6	1/2"
HNJ 0825	JIC#8	1/4"
HNJ 0838	JIC#8	3/8"
HNJ 0850	JIC#8	1/2"
HNJ 1275	JIC#12	3/4"
HNJ 1610	JIC#16	1"

PIPE SWIVEL UNION

FEMALE NPSM SWIVEL TO FEMALE NPSM SWIVEL



PART #	SIDE A	SIDE B
PSU 2525	1/4"	1/4"
PSU 3838	3/8"	3/8"
PSU 5050	1/2"	1/2"
PSU 7575	3/4"	3/4"
PSU 1010	1"	1"

CUSTOM SIZES AND OTHER COUPLING CAPABILITIES AVAILABLE ON ALL HOSES.
TO PLACE AN ORDER OR SPEAK WITH A CRP REPRESENTATIVE, CALL 800-526-4066.

HEX COUPLING

FEMALE NPT TO FEMALE NPT



PART #	SIDE A	SIDE B
HPC 1212	1/8"	1/8"
HPC 1225	1/8"	1/4"
HPC 2525	1/4"	1/4"
HPC 2538	1/4"	3/8"
HPC 2550	1/4"	1/2"
HPC 3838	3/8"	3/8"
HPC 3850	3/8"	1/2"
HPC 5050	1/2"	1/2"
HPC 5075	1/2"	3/4"
HPC 7575	3/4"	3/4"
HPC 7510	3/4"	1"
HPC 1010	1"	1"

ADAPTER

MALE NPT TO FEMALE NPT, 30° CHAMFER MALE END



PART #	SIDE A	SIDE B
PA 1212	1/8"	1/8"
PA 1225	1/8"	1/4"
PA 1238	1/8"	3/8"
PA 2525	1/4"	1/4"
PA 2538	1/4"	3/8"
PA 2550	1/4"	1/2"
PA 2575	1/4"	3/4"
PA 3838	3/8"	3/8"
PA 3850	3/8"	1/2"
PA 3875	3/8"	3/4"
PA 5050	1/2"	1/2"
PA 5075	1/2"	3/4"
PA 5010	1/2"	1"
PA 7575	3/4"	3/4"
PA 7510	3/4"	1"
PA 1010	1"	1"

HEX REDUCER BUSHING

MALE TO FEMALE, 30° CHAMFER MALE END



PART #	SIDE A	SIDE B
HRB 1225	1/8"	1/4"
HRB 1238	1/8"	3/8"
HRB 1250	1/8"	1/2"
HRB 2538	1/4"	3/8"
HRB 2550	1/4"	1/2"
HRB 2575	1/4"	3/4"
HRB 2510	1/4"	1"
HRB 3850	3/8"	1/2"
HRB 3875	3/8"	3/4"
HRB 3810	3/8"	1"
HRB 5075	1/2"	3/4"
HRB 5010	1/2"	1"
HRB 7510	3/4"	1"

CUSTOM SIZES AND OTHER COUPLING CAPABILITIES AVAILABLE ON ALL HOSES.
TO PLACE AN ORDER OR SPEAK WITH A CRP REPRESENTATIVE, CALL 800-526-4066.

FEMALE ADAPTER UNION

FEMALE TO FEMALE SWIVEL, 30° CHAMFER MALE END



PART #	SIDE A	SIDE B
FA 1212	1/8"	1/8"
FA 1225	1/8"	1/4"
FA 2512	1/4"	1/8"
FA 2525	1/4"	1/4"
FA 2538	1/4"	3/8"
FA 3825	3/8"	1/4"
FA 3838	3/8"	3/8"
FA 3850	3/8"	1/2"
FA 5038	1/2"	3/8"
FA 5050	1/2"	1/2"
FA 5075	1/2"	3/4"
FA 7550	3/4"	1/2"
FA 7575	3/4"	3/4"
FA 7510	3/4"	1"
FA 1075	1"	3/4"
FA 1010	1"	1"

MALE ADAPTER UNION

MALE NPT TO FEMALE NPSM SWIVEL, 30° CHAMFER MALE END



PART #	SIDE A	SIDE B
MFA 1212	1/8"	1/8"
MFA 1225	1/8"	1/4"
MFA 2512	1/4"	1/8"
MFA 2525	1/4"	1/4"
MFA 2538	1/4"	3/8"
MFA 3825	3/8"	1/4"
MFA 3838	3/8"	3/8"
MFA 3850	3/8"	1/2"
MFA 5038	1/2"	3/8"
MFA 5050	1/2"	1/2"
MFA 5075	1/2"	3/4"
MFA 7550	3/4"	1/2"
MFA 7575	3/4"	3/4"
MFA 7510	3/4"	1"

FEMALE JIC ADAPTER

FEMALE JIC SWIVEL TO MALE NPT



PART #	SIDE A	SIDE B
FAMJ 0425	JIC#4	1/4"
FAMJ 0525	JIC#5	1/4"
FAMJ 0625	JIC#6	1/4"
FAMJ 0638	JIC#6	3/8"
FAMJ 0838	JIC#8	3/8"
FAMJ 0850	JIC#8	1/2"
FAMJ 1275	JIC#12	3/4"

FEMALE JIC ADAPTER

FEMALE JIC SWIVEL TO FEMALE



PART #	SIDE A	SIDE B
FAFJ 0425	JIC#4	1/4"
FAFJ 0625	JIC#6	1/4"
FAFJ 0638	JIC#6	3/8"
FAFJ 0650	JIC#6	1/2"
FAFJ 0838	JIC#8	3/8"
FAFJ 0850	JIC#8	1/2"
FAFJ 1275	JIC#12	3/4"

MALE SWIVEL ELBOW

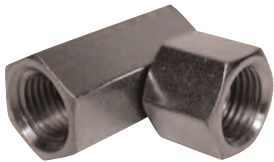
MALE NPT TO FEMALE NPSM SWIVEL, 30° CHAMFER MALE END



PART #	SIDE A	SIDE B
MPE 2525	1/4"	1/4"
MPE 2538	1/4"	3/8"
MPE 3825	3/8"	1/4"
MPE 3838	3/8"	3/8"
MPE 3850	3/8"	1/2"
MPE 5038	1/2"	3/8"
MPE 5050	1/2"	1/2"
MPE 5075	1/2"	3/4"
MPE 7550	3/4"	1/2"
MPE 7575	3/4"	3/4"
MPE 1075	1"	3/4"
MPE 1010	1"	1"

FEMALE SWIVEL ELBOW

FEMALE TO 90° FEMALE SWIVEL, 30° CHAMFER MALE END



PART #	SIDE A	SIDE B
FPE 2525	1/4"	1/4"
FPE 2538	1/4"	3/8"
FPE 3825	3/8"	1/4"
FPE 3838	3/8"	3/8"
FPE 3850	3/8"	1/2"
FPE 5038	1/2"	3/8"
FPE 5050	1/2"	1/2"
FPE 5075	1/2"	3/4"
FPE 7550	3/4"	1/2"
FPE 7575	3/4"	3/4"
FPE 1010	1"	1"

HEX HEAD PLUG

SOLID MALE END TO PLUG



PART #	SIDE A
HHP 12	1/8"
HHP 25	1/4"
HHP 38	3/8"
HHP 50	1/2"
HHP 75	3/4"
HHP 100	1"

HEX CAP

FEMALE NPT CAP



PART #	SIDE A
HC 12	1/8"
HC 25	1/4"
HC 38	3/8"
HC 50	1/2"
HC 75	3/4"
HC 100	1"

SQUARE HEAD PLUG

MALE NPT PLUG



PART #	SIDE A
SPP 12	1/8"
SPP 25	1/4"
SPP 38	3/8"
SPP 50	1/2"
SPP 75	3/4"
SPP 100	1"

JIC CAP PLUG

MALE JIC PLUG



PART #	SIDE A
JC 12	JIC#2
JC 25	JIC#4
JC 30	JIC#5
JC 38	JIC#6
JC 50	JIC#8
JC 62	JIC#10
JC 75	JIC#12
JC 100	JIC#16

UNION TEES

MALE NPT BY MALE NPT BY MALE NPT, 30° CHAMFER MALE END



PART #	SIDE A	SIDE B	SIDE C
UPT 12	1/8"	1/8"	1/8"
UPT 25	1/4"	1/4"	1/4"
UPT 38	3/8"	3/8"	3/8"
UPT 50	1/2"	1/2"	1/2"
UPT 75	3/4"	3/4"	3/4"
UPT 100	1"	1"	1"

FEMALE TEE

FEMALE NPT BY MALE NPT BY MALE NPT



PART #	SIDE A	SIDE B	SIDE C
FPT 12	1/8"	1/8"	1/8"
FPT 25	1/4"	1/4"	1/4"
FPT 38	3/8"	3/8"	3/8"
FPT 50	1/2"	1/2"	1/2"
FPT 75	3/4"	3/4"	3/4"
FPT 100	1"	1"	1"

UNION TEE

FEMALE NPSM SWIVEL



PART #	SIDE A	SIDE B	SIDE C
UPTF 12	1/8"	1/8"	1/8"
UPTF 25	1/4"	1/4"	1/4"
UPTF 38	3/8"	3/8"	3/8"
UPTF 50	1/2"	1/2"	1/2"
UPTF 75	3/4"	3/4"	3/4"
UPTF 100	1"	1"	1"

FEMALE CROSS

FEMALE NPT ALL ENDS



PART #	SIDE A	SIDE B	SIDE C	SIDE D
FC 12	1/8"	1/8"	1/8"	1/8"
FC 25	1/4"	1/4"	1/4"	1/4"
FC 38	3/8"	3/8"	3/8"	3/8"
FC 50	1/2"	1/2"	1/2"	1/2"
FC 75	3/4"	3/4"	3/4"	3/4"
FC 100	1"	1"	1"	1"

LIVE GUN SWIVEL

MALE NPT TO FEMALE NPSM SWIVEL, 30° CHAMFER MALE END



PART #	SIDE A	SIDE B	WP
FSG2525	1/4" M NPT	1/4" F NPSM	7,250 psi
FSG3838	3/8" M NPT	3/8" F NPSM	7,250 psi

LIVE HOSE SWIVELS

30° CHAMFER MALE END



MALE NPT TO FEMALE NPT

PART #	SIDE A	SIDE B	
FS 2525	1/4"	1/4"	Steel
FS 3838	3/8"	3/8"	Steel
FS 5050	1/2"	1/2"	Steel
FS 7575	3/4"	3/4"	Steel
FS 1010	1"	1"	Steel

FEMALE NPT BOTH SIDES

PART #	SIDE A	SIDE B
FSF 2525	1/4"	1/4"
FSF 3838	3/8"	3/8"
FSF 5050	1/2"	1/2"
FSF 7575	3/4"	3/4"
FSF 1010	1"	1"

MALE ELBOW

MALE NPT END TO 90° MALE NPT END, 30° CHAMFER MALE END



PART #	SIDE A	SIDE B
ME 2525	1/4"	1/4"
ME 2538	1/4"	3/8"
ME 3838	3/8"	3/8"
ME 3850	3/8"	1/2"
ME 5050	1/2"	1/2"
ME 5075	1/2"	3/4"
ME 7575	3/4"	3/4"
ME 1010	1"	1"

TEE

ONE FEMALE NPT END, TWO MALE NPT ENDS, 30° CHAMFER MALE END



PART #	SIDE A	SIDE B	SIDE C
PT 25	1/4"	1/4"	1/4"
PT 38	3/8"	3/8"	3/8"
PT 50	1/2"	1/2"	1/2"
PT 75	3/4"	3/4"	3/4"

MALE RUN TEE

TWO FEMALE NPT ENDS, ONE MALE NPT ENDS, 30° CHAMFER MALE END



PART #	SIDE A	SIDE B	SIDE C
MPST 25	1/4"	1/4"	1/4"
MPST 38	3/8"	3/8"	3/8"
MPST 50	1/2"	1/2"	1/2"
MPST 75	3/4"	3/4"	3/4"
MPST 100	1"	1"	1"

STAINLESS STEEL – 316 GRADE

HEX NIPPLE

MALE NPT TO MALE NPT, 30° CHAMFER MALE END



PART #	SIDE A	SIDE B
HN 12 SS	1/8"	1/8"
HN 25 SS	1/4"	1/4"
HN 38 SS	3/8"	3/8"
HN 50 SS	1/2"	1/2"
HN 75 SS	3/4"	3/4"
HN 100 SS	1"	1"

HEX REDUCING NIPPLE

MALE NPT TO MALE NPT, 30° CHAMFER MALE END



PART #	SIDE A	SIDE B
HRN 1225 SS	1/8"	1/4"
HRN 2538 SS	1/4"	3/8"
HRN 2550 SS	1/4"	1/2"
HRN 3850 SS	3/8"	1/2"
HRN 3875 SS	3/8"	3/4"
HRN 5075 SS	1/2"	3/4"
HRN 7510 SS	3/4"	1"

HEX REDUCING BUSHING

MALE NPT TO FEMALE NPT, 30° CHAMFER MALE END



PART #	SIDE A	SIDE B
HRB 1225 SS	1/8"	1/4"
HRB 2538 SS	1/4"	3/8"
HRB 3850 SS	3/8"	1/2"
HRB 5075 SS	1/2"	3/4"
HRB 7510 SS	3/4"	1"

MALE ADAPTER UNION

MALE NPT TO FEMALE NPSM SWIVEL, 30° CHAMFER MALE END



PART #	SIDE A	SIDE B
MFA 2525 SS	1/4"	1/4"
MFA 2538 SS	1/4"	3/8"
MFA 3825 SS	3/8"	1/4"
MFA 3838 SS	3/8"	3/8"
MFA 3850 SS	3/8"	1/2"
MFA 5050 SS	1/2"	1/2"
MFA 7575 SS	3/4"	3/4"

FEMALE ADAPTER UNION

FEMALE NPT TO FEMALE NPSM SWIVEL



PART #	SIDE A	SIDE B
FA 2525 SS	1/4"	1/4"
FA 3838 SS	3/8"	3/8"

ADAPTER

MALE NPT TO FEMALE NPT RIGID, 30° CHAMFER MALE END



PART #	SIDE A	SIDE B
PA 1212 SS	1/8"	1/8"
PA 1225 SS	1/8"	1/4"
PA 1238 SS	1/8"	3/8"
PA 2525 SS	1/4"	1/4"
PA 2538 SS	1/4"	3/8"
PA 3838 SS	3/8"	3/8"
PA 3850 SS	3/8"	1/2"
PA 3875 SS	3/8"	3/4"
PA 5075 SS	1/2"	3/4"
PA 5010 SS	1/2"	1"

CUSTOM SIZES AND OTHER COUPLING CAPABILITIES AVAILABLE ON ALL HOSES.
TO PLACE AN ORDER OR SPEAK WITH A CRP REPRESENTATIVE, CALL 800-526-4066.

HEX COUPLING

FEMALE NPT TO FEMALE NPT



PART #	SIDE A	SIDE B
HPC 1212 SS	1/8"	1/8"
HPC 1225 SS	1/8"	1/4"
HPC 2525 SS	1/4"	1/4"
HPC 2538 SS	1/4"	3/8"
HPC 3838 SS	3/8"	3/8"
HPC 3850 SS	3/8"	1/2"
HPC 5050 SS	1/2"	1/2"
HPC 7575 SS	3/4"	3/4"
HPC 7510 SS	3/4"	1"

FEMALE TEE

FEMALE BY FEMALE BY FEMALE



PART #	SIDE A	SIDE B	SIDE C
FPT 25 SS	1/4"	1/4"	1/4"
FPT 38 SS	3/8"	3/8"	3/8"
FPT 50 SS	1/2"	1/2"	1/2"
FPT 75 SS	3/4"	3/4"	3/4"

UNION TEE

MALE NPT TO MALE NPT TO MALE NPT, 30° CHAMFER MALE END



PART #	SIDE A	SIDE B	SIDE C
UPT 25 SS	1/4"	1/4"	1/4"
UPT 38 SS	3/8"	3/8"	3/8"

MALE ELBOW

90° MALE NPT TO MALE NPT, 30° CHAMFER MALE END



PART #	SIDE A	SIDE B
ME 1225 SS	1/8"	1/4"
ME 2525 SS	1/4"	1/4"
ME 2538 SS	1/4"	3/8"
ME 3838 SS	3/8"	3/8"
ME 5050 SS	1/2"	1/2"
ME 7575 SS	3/4"	3/4"
ME 1010 SS	1"	1"

FEMALE ELBOW

90° FEMALE NPT TO FEMALE NPT



PART #	SIDE A	SIDE B
FE 2525 SS	1/4"	1/4"
FE 2538 SS	1/4"	3/8"
FE 5050 SS	1/2"	1/2"
FE 7575 SS	3/4"	3/4"

MALE SWIVEL ELBOW

90° MALE NPT TO FEMALE NPSM SWIVEL, 30° CHAMFER MALE END



PART #	SIDE A	SIDE B
MPE 2525 SS	1/4"	1/4"
MPE 3838 SS	3/8"	3/8"
MPE 5050 SS	1/2"	1/2"
MPE 7575 SS	3/4"	3/4"

MALE/FEMALE ELBOW

90° MALE NPT TO FEMALE NPT, 30° CHAMFER MALE END



PART #	SIDE A	SIDE B
MFE 2525 SS	1/4"	1/4"
MFE 3838 SS	3/8"	3/8"
MFE 5050 SS	1/2"	1/2"
MFE 7575 SS	3/4"	3/4"

HEX HEAD PLUG

MALE NPT PLUG



PART #	SIZE
HHP 25 SS	1/4"
HHP 38 SS	3/8"

MALE CONNECTOR

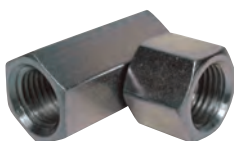
MALE JIC TO MALE, 30° CHAMFER



PART #	SIDE A	SIDE B
HNJ 0425 SS	JIC#4	1/4"
HNJ 0525 SS	JIC#5	1/4"

FEMALE SWIVEL ELBOW

90° FEMALE TO FEMALE SWIVEL



PART #	SIDE A	SIDE B
FPE 7575 SS	3/4"	3/4"

MALE RUN TEE

TWO FEMALE ENDS, ONE MALE NPT END, 30° CHAMFER



PART #	SIDE A	SIDE B	SIDE C
MPST 25 SS	1/4"	1/4"	1/4"

CUSTOM SIZES AND OTHER COUPLING CAPABILITIES AVAILABLE ON ALL HOSES.
TO PLACE AN ORDER OR SPEAK WITH A CRP REPRESENTATIVE, CALL 800-526-4066.

ADAPTER KIT

STARTER ASSORTMENT OF ADAPTERS



PART #	QTY	SIDE A	SIDE B	SIDE C	SEE PG.
HN 25	25	1/4"	1/4"		19
HN 38	10	3/8"	3/8"		19
HN 50	6	1/2"	1/2"		19
HRN 2538	6	1/4"	3/8"		19
HRN 3850	6	3/8"	1/2"		19
HRB 2538	6	1/4"	3/8"		20
MFA 2525	6	1/4"	1/4"		21
MFA 2538	6	1/4"	3/8"		21
MFA 3838	6	3/8"	3/8"		21
MFA 3825	6	3/8"	1/4"		21
MFA 3850	6	3/8"	1/2"		21
FA 2525	6	1/4"	1/4"		21
HC 25	6	1/4"			22

MINI ADAPTER KIT

STARTER ASSORTMENT OF ADAPTERS



PART #	QTY	SIDE A	SIDE B	SIDE C	SEE PG.
HN 25	10	1/4"	1/4"		19
HN 38	6	3/8"	3/8"		19
HRN 2538	6	1/4"	3/8"		19
MFA 2525	5	1/4"	1/4"		21
MFA 2538	4	1/4"	3/8"		21
MFA 3838	4	3/8"	3/8"		21
MFA 3825	4	3/8"	1/4"		21
FA 2525	5	1/4"	1/4"		21
HC 25	5	1/4"			22
HC 38	5	3/8"			22
HHP 25	5	1/4"			22
HHP 38	5	3/8"			22

Ball Valves

If you need ball valves that offer the same quality as the Reinflex hoses in your applications and installations, look no further. The male and female ball valve assemblies shown below work with paint, petroleum-based hydraulic fluids, fuel oil, and air.

Reinflex's male-thread ball valves use carbon steel for the body, hard chrome plated carbon steel for the ball, and zinc plated steel for the stem. Connections are male NPT, full bore, and the valves are rated to a working pressure of 7,500 PSI. Our female-thread ball valves have carbon steel or stainless steel bodies, hard chrome plated carbon steel or stainless steel balls, zinc plated steel or stainless steel stems, and Viton or PTFE seals. Connection is female NPT, full bore. For working pressures, please see chart below.

If you require other ball valve construction types, talk to a CRP service specialist who will be happy to discuss the other options available.

BALL VALVES MALE THREADS

BODY: FORGED CARBON STEEL STEM: FORGED CARBON STEEL
BALL: CHROME PLATED STEEL



PART #	SIDE A	SIDE B	CONNECTIONS	WORKING PRESSURE	BALL SEALS	STEM SEALS
BV 2525	1/4"	1/4"	Male NPT	7,250 psi	Delrin	Viton
BV 3838	3/8"	3/8"	Male NPT	7,250 psi	Delrin	Viton

BALL VALVES FEMALE THREADS

BODY: FORGED CARBON STEEL STEM: FORGED CARBON STEEL
BALL: CHROME PLATED STEEL



PART #	SIDE A	SIDE B	CONNECTIONS	WORKING PRESSURE	BALL SEALS	STEM SEALS
BVF 2525	1/4"	1/4"	Female NPT	7,250 psi	Delrin	Viton
BVF 3838	3/8"	3/8"	Female NPT	7,250 psi	Delrin	Viton
BVF 5050	1/2"	1/2"	Female NPT	7,250 psi	Delrin	Viton
BVF 7575	3/4"	3/4"	Female NPT	5,800 psi	Delrin	Viton
BVF 1010	1"	1"	Female NPT	5,800 psi	Delrin	Viton
BVF 2525 T	1/4"	1/4"	Female NPT	4,500 psi	Viton	PTFE
BVF 3838 T	3/8"	3/8"	Female NPT	4,500 psi	Viton	PTFE
BVF 5050 T	1/2"	1/2"	Female NPT	4,500 psi	Viton	PTFE
BVF 7575 T	3/4"	3/4"	Female NPT	3,600 psi	Viton	PTFE
BVF 1010 T	1"	1"	Female NPT	3,600 psi	Viton	PTFE

NOTE: Replacement Handles and Seal Kits Available.

CUSTOM SIZES AND OTHER COUPLING CAPABILITIES AVAILABLE ON ALL HOSES.
TO PLACE AN ORDER OR SPEAK WITH A CRP REPRESENTATIVE, CALL 800-526-4066.

Hose Jacketing

Reinflax is proud to offer Expando PT hose jacketing. Expando PT is a self-fitting protective oversleeve, with expandable braid construction, designed to offer maximum resistance to abrasion and impact damage. Its open weave construction allows easy identification of contents. An additional advantage offered by these lightweight oversleeves is that each size fits several diameters.

Expando PT is easy to apply, has an operating temperature range from -40°F to +125°F, and is up to 4 times more abrasion resistant than competitive products. Additional features like flexibility, choice of colors, and resistance to most industrial fluids round out Expando PT's advantages.

HOSE JACKETING

SELF-FITTING PROTECTIVE OVERSLEEVE



PART # (COLOR)	SLEEVE SIZE	EXPANDED SIZE	FEET PER SPOOL	WEIGHT PER 100 FT. (LBS.)
JACKET 012 (color)	1/8"	1/4"	2,000	0.16
JACKET 025 (color)	1/4"	7/16"	1,000	0.24
JACKET 050 (color)	1/2"	3/4"	500	0.77
JACKET 075 (color)	3/4"	1 1/4"	500	1.20
JACKET 125 (color)	1 1/4"	1 3/4"	250	1.60
JACKET 175 (color)	1 3/4"	2 3/4"	250	2.70
JACKET 200 (color)	2"	3 1/2"	250	3.30
JACKET 250 (color)	2 1/2"	4 1/2"	250	4.60

*Always specify hose jacket color when ordering.

Pressure Gauge

Reinflex's Pressure Gauge line up comes in a variety of pressure ranges, dial and connection sizes, and mounting configurations. For added durability and accuracy in more extreme environments, glycerine filled gauges are also available.

PRESSURE GAUGE

GLASS-FACED



PART #	PRESSURE RANGE (PSI)	CONNECTION (MALE)	MOUNT	DIAL DIAMETER	METAL FINISH	LIQUID FILLED
PG15-200B	0 to 15	1/8"	Back	2"	Black	No
PG30-150	0 to 30	1/8"	Bottom	1 1/2"	Black	No
PG60-200	0 to 60	1/4"	Bottom	2"	Black	No
PG60-200B	0 to 60	1/4"	Back	2"	Black	No
PG100-150	0 to 100	1/8"	Bottom	1 1/2"	Black	No
PG100-150B	0 to 100	1/8"	Back	1 1/2"	Black	No
PG100-200	0 to 100	1/4"	Bottom	2"	Black	No
PG100-200B	0 to 100	1/4"	Back	2"	Black	No
PG100-200-8	0 to 100	1/8"	Bottom	2"	Black	No
PG160-200	0 to 160	1/4"	Bottom	2"	Black	No
PG160-200B	0 to 160	1/4"	Back	2"	Black	No
PG200-150	0 to 200	1/8"	Bottom	1 1/2"	Black	No
PG200-150B	0 to 200	1/8"	Back	1 1/2"	Black	No
PG200-200	0 to 200	1/4"	Bottom	2"	Black	No
PG100-250	0 to 100	1/4"	Bottom	2 1/2"	Stainless	Yes
PG300-250	0 to 300	1/4"	Bottom	2 1/2"	Stainless	Yes
PG1000-250	0 to 1,000	1/4"	Bottom	2 1/2"	Stainless	Yes
PG1500-250	0 to 1,500	1/4"	Bottom	2 1/2"	Stainless	Yes
PG2000-250	0 to 2,000	1/4"	Bottom	2 1/2"	Stainless	Yes
PG3000-250	0 to 3,000	1/4"	Bottom	2 1/2"	Stainless	Yes
PG5000-250	0 to 5,000	1/4"	Bottom	2 1/2"	Stainless	Yes
PG6000-250	0 to 6,000	1/4"	Bottom	2 1/2"	Stainless	Yes
PG10K-250	0 to 10,000	1/4"	Bottom	2 1/2"	Stainless	Yes

PRESSURE TEST GAUGE KIT

INCLUDES PSI GAUGE, TEE, SWIVEL AND HEX NIPPLE



PART #	PRESSURE RANGE (PSI)	CONNECTION (MALE)	MOUNT	DIAL DIAMETER	METAL FINISH	LIQUID FILLED
PG5000-KIT	0 to 5,000	1/4"	Bottom	2 1/2"	Stainless (Gauge) Plated Steel (Fittings)	Yes

CUSTOM SIZES AND OTHER COUPLING CAPABILITIES AVAILABLE ON ALL HOSES.
TO PLACE AN ORDER OR SPEAK WITH A CRP REPRESENTATIVE, CALL 800-526-4066.

Quick Disconnects

The fastest and simplest way to connect and disconnect hoses are these quick couplers. For use in spray applications, the working pressure rating for the 1/4" coupler is 5,000 psi; for the 3/8" option, 4,000 psi; and for the 1/2", 4,000 psi. Viton O-rings allow use with most paints and solvents. We can also source non-standard couplers, call for details.

QUICK COUPLERS



FEMALE ENDS		MALE ENDS	
PART #	SIZE	PART #	SIZE
QC 25F	1/4"	QC 25M	1/4"
QC 38F	3/8"	QC 38M	3/8"
QC 50F	1/2"	QC 50M	1/2"

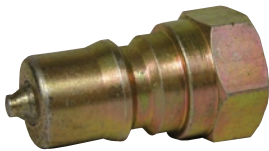
NIPPLES



FEMALE ENDS		MALE ENDS	
PART #	SIZE	PART #	SIZE
QC 25FN	1/4"	QC 25MN	1/4"
QC 38FN	3/8"	QC 38MN	3/8"
QC 50FN	1/2"	QC 50MN	1/2"

DOUBLE SHUT OFF SERIES

ALL FEMALE ENDS

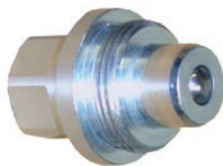


QUICK COUPLERS		NIPPLES	
PART #	SIZE	PART #	SIZE
QCDS 25F	1/4"	QCDS 25FN	1/4"
QCDS 38F	3/8"	QCDS 38FN	3/8"

10,000 PSI QUICK COUPLERS



COUPLERS		
PART #	SIZE	BRAND
QCS18M10KP	1/8" Male NPT	Pioneer
QCS25M10KP	1/4" Male NPT	Pioneer
QCS38M10KP	3/8" Male NPT	Pioneer



NIPPLES		
PART #	SIZE	BRAND
QCS18MN10KP	1/8" Male NPT	Pioneer
QCS25MN10KP	1/4" Male NPT	Pioneer
QCS25FN10KP	1/4" Female NPT	Pioneer
QCS38FN10KP	3/8" Female NPT	Pioneer